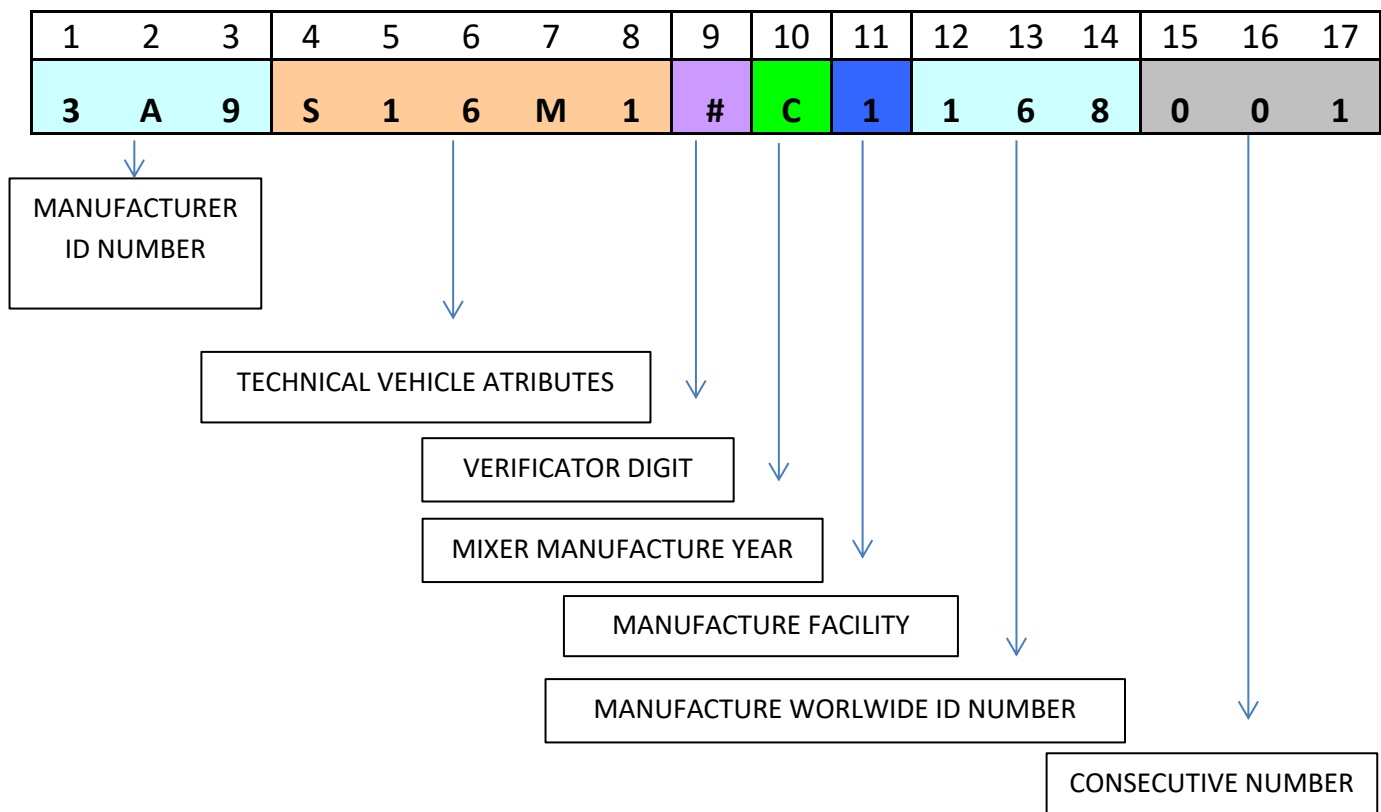


HOW TO READ A VIN SERIAL NUMBER

CROWN equipment come with a 17 digits serial number on every unit. This serial number helps us to track manufacture year on every unit.

This is how the serial number is composed.



Position 1-3 Worldwide manufacturer identification number (3A9).

Position 4-8 Technical vehicle/trailer characteristics.

Position 4 Vehicle type.

R	TRAILER
---	---------

S	SEMITRAILER
---	-------------

Position 5-6 Equipment identification number.

EQUIPMENT IDENTIFICATION NUMBER			
VIN NUMBER IDENTIFICATION	MODEL	VIN NUMBER IDENTIFICATION	MODEL
07	4S	72	MAX MIX
08	S4S	31	C6C
23	6SR	32	C6P
24	S6SR	33	C9C
11	6PR	35	C9P
12	8S	34	C12C
13	S8S	42	C9 PRO Series
14	8P	73	TCS
61	9S	43	JCS
62	S9S	44	JCST
15	10S	45	MCS1
16	S10S	46	MSM
17	12S	47	BBC600
18	S12S	58	BBS20
19	12SH	64	MVP60
20	S12SH	65	MVP95
21	16SH	66	MVP125
22	S16SH	67	RAM70H
71	TFP	69	WBT36
		70	WBT46

Position 8 Number of axles (from 1 to 3).

1 = 1 axle, 2 = 2 axles, 3 = 3 axles

Position 9 VIN verification number authenticity.

Position 10 Year of manufacture.

YEAR	CODE
2000	Y
2001	1
2002	2
2003	3
2004	4
2005	5
2006	6
2007	7
2008	8
2009	9
2010	A
2011	B
2012	C

YEAR	CODE
2013	D
2014	E
2015	F
2016	G
2017	H
2018	J
2019	K
2020	L
2021	M
2022	N
2023	P
2024	R

Position 11 Manufacture facility.

Position 12-14 Manufacturer worldwide identification number.

Position 15-17 Consecutive number.