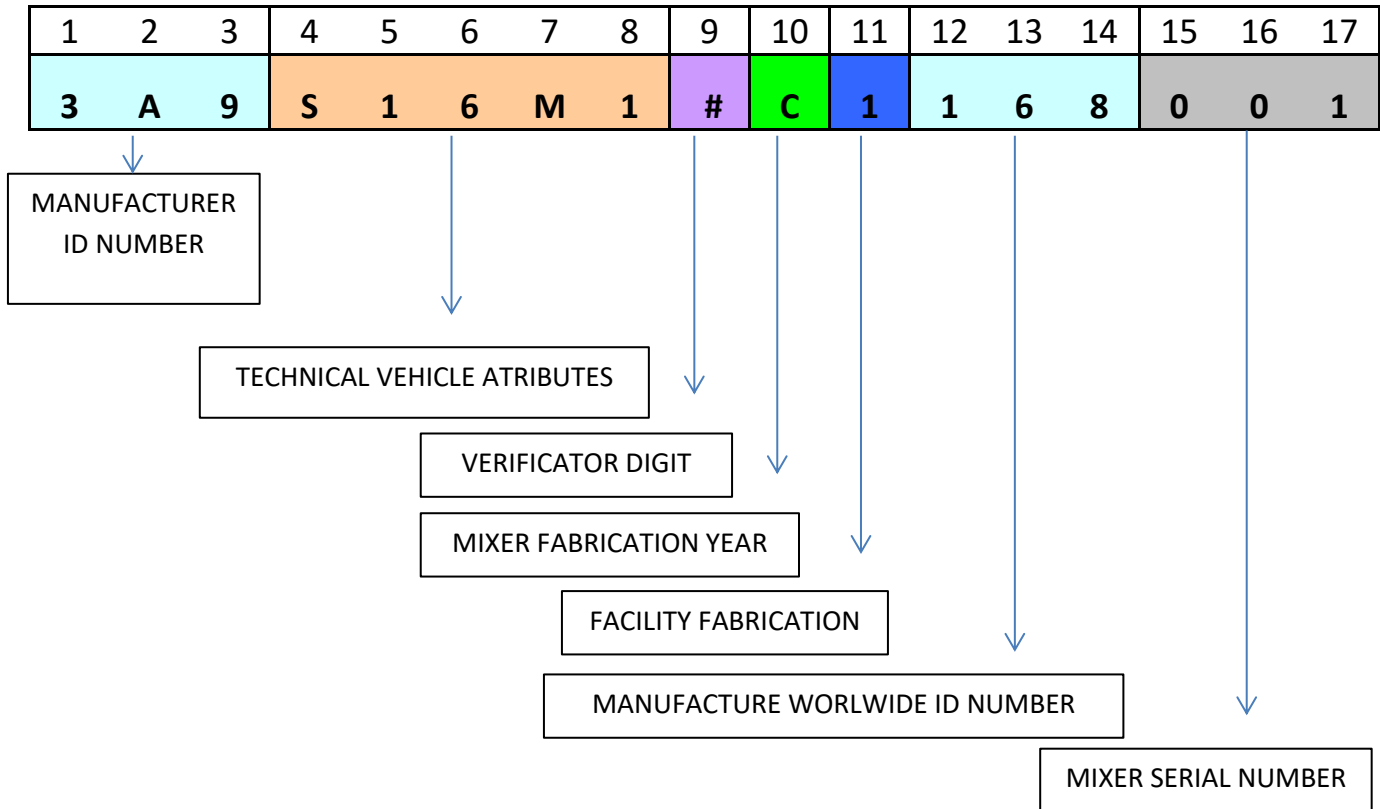


**HOW TO: READ A VIN SERIAL NUMBER ON CROWN UNITS**

CROWN Mixers come with a 17 digits serial number on every unit. This serial number helps us to track manufacture date on every unit.

Here is an easy explanation in how to determine your mixer manufactured age.

**EXAMPLE :**



**Position 1-3** worldwide manufacturer Identification number (3A9)

**Position 4-8** Technical vehicle/trailer characteristics

**Position 4** Vehicle Type

R	TRAILER
---	---------

S	SEMITRAILER
---	-------------

**Position 5-6** Vehicle length, where 07 is the smallest and 40 is the largest.

EQUIPMENT IDENTIFICATION NUMBER			
VIN NUMBER IDENTIFICATION	MORTAR MIXERS	VIN NUMBER IDENTIFICATION	CONCRETE MIXERS
11	6PR	32	C6P
12	8SR	33	C9C
13	S8SR	34	C12C
14	8PR	35	C9P
15	10SR	39	R100TB
16	S10S	40	R150TB
17	12SR	41	R200LX
18	S12S	42	C9 PRO Series
19	12SH	43	JCS
22	S16SH	44	JCST
23	6SR	45	MCS1
31	C6C	46	MSM
46	MSM	43	JCS

**Position 8** number of axles (from 1 to 3)

1 = 1 axle, 2 = 2 axles, 3 = 3 axles

**Position 9** VIN verification number authenticity

**Position 10** Year of Manufacturing

YEAR	CODE
2000	1
2001	2
2002	3
2003	4
2004	5

2005	6
2006	7
2007	8
2008	9
2009	A
2010	B

2011	C
2012	D
2013	E
2014	F
2015	G
2016	H

2017	I
2018	J
2019	K
2020	L
2021	M
2022	N

**Position 11** Manufactured Facility

**Position 12-14** Manufacturer worldwide identification number

**Position 15-17** Consecutive Serial Numbers of that year.